

**SUNDAY SCHEDULE**

3:00 pm - 5:00 pm | **Instructor Check-In** | *Halliehurst Front Porch*

3:00 pm - 6:00 pm | **Student Check-In** | *Halliehurst Front Porch*

→ *Get checked in, follow instructions for loading into your dorm and parking, then join in a jam on the porch!*

4:30 pm - 5:00 pm | **Folk Arts For Kids Orientation** | *Gribble Lounge*

5:00 pm - 5:45 pm | **Instructor Orientation** | *Gribble Lounge*

→ *For instructors only. Students will meet their instructors at the Theme Week Orientations at 7 pm.*

5:00 pm - 7:00 pm | **Dinner** | *Benedum Dining Hall*

7:00 pm - 7:45 pm | **All Augusta Orientation** | *MCA Senate Commons*

8:00 pm - 9:00 pm | **Theme Week Orientations**

**Bluegrass:** *Timms Lounge* | **Vocal:** *Chapel* | **Craft:** *Senate Commons*

→ *Meet your instructors, learn about classes and plan your week! Attend the one that most suits your class choices.*

After Orientation (~9:00 pm) | **Bluegrass Welcome Party** | *Halliehurst Porch*

→ *Get to know your fellow students & instructors over songs and tunes!*

After Orientation (~9:00 pm) | **Vocal Week Jam** | *Booth Library Breezeway*

**IMPORTANT NUMBERS AND INFORMATION**

**Augusta Office** : (304) 637 - 1209. \*NEW THIS YEAR\* The Augusta Office is located in the *Paull Gallery on the 2nd floor of the Myles Center for the Arts.*

M (8 am - 8 pm); T - Th (8 am - 5 pm); F (8 am - 8 pm)

**D&E Public Safety** : (304) 704 - 9111 | Located in the *Gatehouse*. Available 24/7.

**Emergencies** : 911

**AUGUSTA NEWS**

**NEW YEAR-ROUND HOME**

We did it! The Augusta Heritage Center has purchased a historic mixed-use building in the center of downtown Elkins. The first floor will be redeveloped into a dance hall, cafe, and retail space. The second floor will consist of classrooms for future programming and the AHC team headquarters. The top two floors will provide 12 high-quality apartments to artists and AmeriCorps members, each with a community service project as a part of their residency.

In addition to all of the opportunities that this building affords us, we are excited about new and continued partnerships with venues in Elkins and the entire state of West Virginia. The future is bright for Augusta, and we will continue to explore new and exciting ways to propagate and elevate the traditional arts and culture of Appalachia and beyond.

If you have questions or ideas to share about the future of Augusta, be sure to come to Seth's Open Office Hours on **Wednesday at 6 pm in the Chapel.**

**FOCUS ON SCHOLARSHIPS**

Our fundraising efforts for 2024 are focused on student scholarships. We are proud to be able to award scholarships to deserving students in need at all of our programs. Some of these are through endowed funds that memorialize special individuals with strong ties to Augusta. Many of each year's scholarships are funded through private donations to our scholarship fund. We are grateful for our community's support of our scholarship students.

Learn more and donate  
to the scholarship  
fund!



See page 6 for  
Craft & Kids  
schedule!

See Theme-Week  
pages for locations  
and more details!

# THEME WEEK DAILY SCHEDULE OVERVIEW

## MONDAY - THURSDAY

## FRIDAY

7:30 - 9:00	BREAKFAST	7:30 - 9:00	BREAKFAST
9:15 - 10:30	PERIOD 1	9:15 - 10:30	PERIOD 1
10:45 - 12:00	PERIOD 2	10:45 - 12:00	PERIOD 2
12:00 - 1:15	LUNCH (OPEN 11:30 AM - 1:30 PM)	12:00 - 1:15	LUNCH
1:15 - 2:15	CULTURAL SESSIONS (SEE BELOW)	1:15 - 2:15	PERIOD 3
2:30 - 3:45	PERIOD 3	2:30 - 4:00	BLUEGRASS: STUDENT SHOWCASE
4:00 - 5:00	PERIOD 4	3:00 - 5:00	VOCAL: CLASS SAMPLER
5:00 - 7:00	DINNER	5:00 - 6:00	DINNER
6:00 - 7:15 & LATER	MINI-CLASSES & EVENING EVENTS (SEE NEXT PAGE)	8:00 - 11:00	SQUARE DANCE

SHOWCASE LOCATIONS ON PAGE 3

## CULTURAL SESSIONS

### BLUEGRASS

Madden Center Timms Lounge

*Presentations, Interviews & More + Announcements*

**Monday** | Bluegrass band dynamics with BG staff

**Tuesday** | Vocals and rhythm with Dede Wyland and Greg Blake; Too many banjos? with Greg Cahill and Murphy Henry

**Wednesday** | Guitar and mandolin with Mike Compton and Tyler Grant; Beyond the Grass with Rebecca Frazier, Matt Flinner, and Sarah Larsen

**Thursday** | Fifts and fourths with Grant Flick and Jacob Warren; Fiddle and banjo with Becky Buller and Ned Luberecki

1:15 PM - 2:15 PM

### VOCAL

Chapel

*Back Porch Visits with Instructors, Group Singing, Announcements & More*

**Monday** | Kathy Bullock, Emily Eagen

**Tuesday** | Laurelyn Dossett & Kari Sickenberger, Ann Downey

**Wednesday** | Matt Watroba, Abigail Washburn

**Thursday** | Val Mindel, Annalee Koehn, Penny Anderson

**Friday** | No Cultural Sessions Today (go to your Period 3 class)

Events with a 🍷 are sponsored by the West Virginia Humanities Council

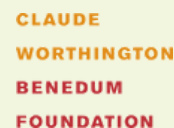
If you attended a WVHC-sponsored lecture, here is a link to the digital audience eval form. These responses help us with grant reporting and applications. Thank you!



To all the individual donors, volunteers, artists, and staff who have contributed to Augusta over the last 50 years...

Thank You!

We are grateful for the support of our granting agencies and partners in 2024:



LEADING THE WAY

# AFTER-CLASS & EVENING EVENTS

BEER AVAILABLE FOR  
SALE AT ALL PAVILION  
EVENTS

## MONDAY

- 7:00 pm | **String Changing Workshop** with Bob Smakula | *Roxanna Booth Lounge*
- 8:00 pm | **6th Annual Bluegrass Onion Jam** with Ira Gitlin & Blues Week Staff | *Pavilion*
- 9:00 pm | **Vocal Week Jam** with Annalee Koehn | *Booth Library Breezeway*

## TUESDAY

- 4:00 - 6:00 pm | **Show & Sell** | *Halliehurst Front Porch*  
→ featuring *Smakula Fretted Instruments* and *The 2024 Augusta Spring Cleaning Extravaganza* (cool finds from Augusta storage)
- 7:30 pm | **Concert featuring Vocal Week Staff** | *MCA Harper Mac Auditorium*
- Following Concert (~9:45 pm) | **Honky-Tonk Karaoke** with Live Band and Dancing | *Pavilion*  
→ Sign up in advance with Emily Miller to participate | There will also be a sign-up sheet outside the dining hall or call 304 637 1209

## WEDNESDAY

- 5:00 pm | **Augusta Family Photo!** | *Halliehurst Back Porch & Lawn*  
→ *Scholarship Recipient Photo to follow!*
- 6:00 pm | **Open Office Hours with Seth Young.** Q&A and info session about Augusta | *Chapel*  
→ *Seth would love to gather your input and envision a bright Augusta future together*
- 6:00 pm - 10:00 pm | **Pickin' in the Park** | *Elkins City Park (Just down the hill!)*
- 8:00 pm | **Vocal Week Student Showcase** | *Chapel*
- 10:30 pm | **Vocal Jam: Doo-Wop & Other Tunes** | *Madden Rotunda*

## THURSDAY

- 6:00 pm - 7:15 pm | **Craft Participant Showcase** | *MCA Senate Commons*
- 7:30 pm | **Concert: Bluegrass Extravaganza** | *MCA Harper Mac Auditorium*
- Following Concert (~9:45 pm) | **Square Dance** with Team Bluegrass | Caller: Bob Smakula | *Pavilion*
- 10:00 pm | **Vocal Week Jam** with Annalee Koehn | *Booth Library Breezeway*

## FRIDAY

- 2:30 pm - 4:00 pm | **Bluegrass Week Student Showcase** | *Madden Center Timms Lounge*
- 3:00 pm - 5:00 pm | **Vocal Week Class Sampler** | *Chapel*
- 8:00 pm | **Square & Contra Dance** with Team Bluegrass | Caller: Mike Miller | *Pavilion*
- 9:00 pm | **Vocal Week Jam** with Annalee Koehn | *Booth Library Breezeway*

## SATURDAY MORNING

- 8:00 am - 10:00 am | **Breakfast** | *Benedum Dining Hall*
- 8:00 am - 11:00 am | **Dorm check-out**  
→ *Pillows stay in your rooms. Students, leave your keys in the drop box in your dorm lobby. Instructors, bring your keys to Lori DiBacco in the Augusta Office.*

## LOOKING FOR A JAM?

You might find one in one of these places... (all spaces open to all genres)

- *Booth Library Breezeway*
- *Caboose Cafe Deck & Patio*
- *Chapel & Plaza*
- *Gribble & Darby Patios*
- *Halliehurst Porches*
- *Icehouse Interior & Patios*
- *JR Patio & Ballroom*
- *Madden Lounge & Patios*
- *MCA Arts Forum*
- *Gazebo*

## MINI-CLASSES 6:00 PM - 7:15 PM

- Clawhammer Banjo from Scratch with Kevin Chesser | *JR Ballroom*
- Plein Air Painting with Kylie Proudfoot-Payne | *Pavilion*
- Matchbox Crankies with Katherine Fahey | *MCA Painting Studio*
- Orkney Tuning (CGDGCD) Immersion with Steve Baughman | *Halliehurst Back Porch*
- Sing For the Health of It with Kim Watroba | *JR Top Floor Lounge*

\$75 TUITION  
REGISTER & PAY BY 6 PM MONDAY @  
AUGUSTA OFFICE, BY PHONE (304 637  
1209), OR ONLINE



SCAN FOR  
CLASS  
DESCRIPTIONS!



SCAN FOR  
 CLASS  
 DESCRIPTIONS!

**PERIOD 1 9:15 AM - 10:30 AM**

- Technique and Sound with Grant Flick (Fiddle, Int) | SC 119
- Taming the Beast with Jacob Warren (Bass, Beg/Int) | JR Ballroom
- Navigating the Fretboard: From Circle of Fifths to 4-3-5 Theory of Finding Chords & Creating Solos Over the Fingerboard with Greg Cahill (Banjo, Int) | Halliehurst Side Porch
- Long Bow, Short Bow: Bluegrass Bow Technique with Sarah Larsen (Fiddle, Beg) | Halliehurst Front Porch
- Learning the Basic Rolls and Using Them to Play a Tune with Murphy Henry (Banjo, Beg) | SC 103
- Good Bluegrass Singing Starts with the Basics with Dede Wyland (Singing, All Levels) | BL Student Lounge
- First Generation Bluegrass, Back Country Blues, Fiddle Tune Repertoire with Mike Compton (Mandolin, Int/Adv) | SC 100
- Bluegrass Mandolin, Part 1 with Matt Flinner (Mandolin, Beg/Int) | SC 104
- Bluegrass Guitar Basics: Intro to Flatpicking with Rebecca Frazier (Guitar, Beg) | JR 33
- Banjo Tunes for Fiddle Players with Becky Buller (Fiddle, Adv) | Halliehurst Back Porch
- Advanced Bluegrassing with Ira Gitlin (All Instruments, Advanced) | Roxanna Booth Lounge

**PERIOD 2 10:45 AM - 12:00 PM**

- Your First 10 Fiddle Tunes with Sarah Larsen (Fiddle, Beg) | Halliehurst Front Porch
- Fundamentals & Technique with Tyler Grant (Guitar, Adv) | SC 100
- Tune Time! with Grant Flick (Fiddle, Int) | SC 119
- The Unified Theory of Banjo with Ned Luberecki (Banjo, Adv) | Halliehurst Back Porch
- Repertoire: Playing Songs & Tunes in Various Keys with Greg Cahill (Banjo, Int) | Halliehurst Side Porch
- Learning Tunes & More with Jacob Warren (Bass, Int/Adv) | JR Ballroom
- Chords, Capos and the Fingerboard with Murphy Henry (Banjo, Beg) | SC 103
- Building a Better Bluegrass Guitar Solo with Greg Blake (Guitar, Int) | BL Student Lounge
- Bluegrass Mandolin, Part 2 with Matt Flinner (Mandolin, Beg/Int) | SC 104
- Bluegrass Guitar Essentials: Intro to Flatpicking Repertoire with Rebecca Frazier (Guitar, Beg) | JR Upstairs Lounge

**PERIOD 3 2:30 PM - 3:45 PM**

- Technique Studies & Mandolin Ensemble Class with Mike Compton (Mandolin, Int/Adv) | SC 104
- Slow Jam with Ira Gitlin (All Instruments, Beg/Int) | Halliehurst Side Porch
- Repertoire with Tyler Grant (Guitar, Adv) | SC 100
- Let's Build Your Bluegrass Repertoire with Dede Wyland (Singing, All Levels) | BL Student Lounge
- Improving Your Bluegrass Rhythm Guitar with Greg Blake (Guitar, Int) | JR 33
- How to Sound Better with Ned Luberecki (Banjo, Adv) | SC 103
- Fiddlers Making Friends with the Fussier Keys with Becky Buller (Fiddle, Adv) | Halliehurst Back Porch

REMINDER! PERIOD 3  
 1:15 PM - 2:15 PM  
 ON FRIDAY!

**PERIOD 4 4:00 PM - 5:00 PM**

- Bluegrass One-Shots with Various Instructors | See Page 7 for daily class options and locations  
 - You don't have to stick to your genre. Choose from amongst the Vocal and the Bluegrass offerings.
- Bluegrass Ensemble with John Seebach (All Instruments, Beg/Int) | Science Center 100
- Kid Jam! with Val Mindel & Emily Miller (All Instruments, All levels. Jam for kids and families-- all are welcome!) | Gribble Patio



SCAN FOR  
CLASS  
DESCRIPTIONS!

**BEFORE CLASS 8:40 A.M. - 9:00 A.M**

Vocal Warm-Ups with Penny Anderson | Madden Center Timms Lounge

**PERIOD 1 9:15 AM - 10:30 AM**

- Songwriting as Storytelling with Laurelyn Dossett (Songwriting, All Levels) | BL Community Room
- Shape Note Singing with Penny Anderson (Singing, All Levels) | SC 318
- Radical Listening & Collective Voice with Abigail Washburn (Singing, All Levels) | Madden Center Timms Lounge
- Music of Civil Rights with Kathy Bullock (Singing, All Levels) | Chapel
- Finding Harmonies Out of Thin Air with Ann Downey (Singing, All Levels) | MCA Harper McNeeley Lobby

**PERIOD 2 10:45 AM - 12:00 PM**

- Harmony Duets with Kari Sickenberger (Singing, All Levels) | BL Community Room
- England Swings with Val Mindel (Singing, All Levels) | Madden Center Timms Lounge
- Cowboy Songs and Yodeling Go Hand in Hand with Ann Downey (Singing, All Levels) | MCA Harper McNeeley Lobby
- Community Singing: For the Sake of the Song with Matt Watroba (Singing, All Levels) | SC 318
- Ad Hoc Harmonies with Flawn Williams (Singing, All Levels) | SC 319
- A Medieval Renaissance Banquet with Emily Eagen (Singing, All Levels) | Chapel

**PERIOD 3 2:30 PM - 3:45 PM**

- Soulful Women Singers with Annalee Koehn (Singing, All Levels) | MCA Harper McNeeley Lobby
- Love Songs and Lullabies with Emily Eagen (Singing, All Levels) | SC 319
- Gospel Choir: Songs of Joy and Hope with Dr. Kathy Bullock (Singing, All Levels) | Chapel
- Getting the Most Out of Every Song with Matt Watroba (Singing, All Levels) | SC 318
- Crafting a Song Cycle with Abigail Washburn (Singing, All Levels) | BL Community Room
- A Capella Ballads & Harmonies with Laurelyn Dossett and Kari Sickenberger (Singing, All Levels) | Timms Lounge

REMINDER! PERIOD 3  
1:15 PM - 2:15 PM  
ON FRIDAY!

**PERIOD 4 4:00 PM - 5:00 PM**

- Vocal One-Shots with Various Artists | See Page 7 for Daily Class Options! You don't have to stick to your genre. Choose from amongst the Vocal and the Bluegrass offerings.
- Kid Jam! with Val Mindel & Emily Miller (All Instruments, All levels. Jam for kids and families-- all are welcome!) | Gribble Patio

## CRAFT SCHEDULE

7:30 - 9:30	BREAKFAST
9:00 - 12:00	MORNING SESSION
12:00 - 1:15	LUNCH
1:00 - 4:00	AFTERNOON SESSION
4:00 - 5:00	OPEN STUDIO
5:00 - 6:00	DINNER
6:00 - 7:15	THURSDAY! CRAFT & FOLK ARTS FOR KIDS SHOWCASE IN MCA SENATE COMMONS

Craft students can register for evening mini-classes and attend all other Augusta events, such as dances, concerts and cultural sessions

## FOLK ART FOR KIDS SCHEDULE

Zoe Payne with Tess Edwards & Val Mindel | Gribble Lounge

9:00 - 12:00	MORNING SESSION
12:00-1:00	LUNCH (SEE BELOW)
1:00 - 4:00	AFTERNOON SESSION
4:00 - 5:00	KID JAM AND SUPERVISED FREE PLAY (PARENT PICK-UP WITHIN THIS HOUR)
6:00 - 7:15	THURSDAY! CRAFT & FOLK ARTS FOR KIDS SHOWCASE IN MCA SENATE COMMONS

Chaperoned lunch: FAFK students may be picked up for lunch OR eat lunch in the D&E dining hall, chaperoned by our staff. If they are eating in the dining hall, they MUST have their own meal card. Meal cards may be purchased at camp check-in. Staff can hold onto the meal cards for the week for safe-keeping.

## CRAFT LOCATIONS

Exploring Multiples through Screen Printing with Woody Woodcock | *MCA Printmaking Studio (downstairs)*

## HELPFUL INFORMATION

**CAMPUS SHUTTLE** | Look for a golf cart looping the campus to help between classes and to bring folks to lunch after second period. If you have specific ongoing daytime or evening shuttle needs, contact the Augusta office (304 637 1209) so we can help arrange a transportation plan for you.

**SHOW & SELL** | Tuesday 4:00 - 6:30 pm. Students, staff and locals sell their wares on *Halliehurst Porch*. This year you can also snag some cool finds from the Augusta storage. Vendors may rent table space for \$20. Stop by the Augusta Office to reserve a space call 304 637 1209 for more info.

**SILENT AUCTION** | Instead of the silent auction, this year we are having an Augusta Yard Sale! Find our table at the Show and Sell on Tuesday to take home some music and memories.... and support the Augusta Scholarship Program!

**SWIMMING** | M-Th (12 pm - 1 pm) | Sign in for free with your Augusta badge | Bring your own towel | *MCA Pool*

**FITNESS CENTER** | M-Th (12 pm - 2 pm) | Sign in for free with your Augusta badge | Clean gym shoes required! | *MCA*

**BOOTH LIBRARY** | Open M-F (9 am - 5 pm) | Computer lab and copier available

**WIFI** | "DE-Guest" network available across campus without a password

**AUGUSTA STORE** (Buy artist merch and Augusta swag!) | Tu 6-10 pm, Th 6-10 pm, Fri 5-6:30 pm, Sat 8-10 am | *MCA across from Harper McNeeley Auditorium* | There will also be Augusta merch pop-ups at the pavilion during the Monday and Friday dances.

# PERIOD 4 ONE-SHOTS

## VOCAL

## BLUEGRASS

MONDAY

- **Writing Protest Songs** with Laurelyn Dossett | *Halliehurst Side Porch*
- **“What’s a Third?”: Intervals and Other Secrets of Music Theory** with Emily Eagen | *Chapel*
- **Songs about Sewing and Sewing Machines (Work Songs Beyond the Lumberjack & Sailor)** with Ann Downey | *JR Upstairs Lounge*

- **Learning to Hear Basic Chord Changes by Ear** (all instruments, beginning) with Murphy Henry | *Roxanna Booth Lounge*
- **Hard-to-Play Keys on the Fiddle, Like B or E** (fiddle and mandolin, intermediate/advanced) with Sarah Larsen | *Madden Center Timms Lounge*
- **So You Want to Be a BLUEGRASS Singer? Bluegrass Vocal Tips and Tricks** with Greg Blake | *SC 100*
- **The Arranger's Toolbox: How to Arrange Music That Tells a Story to the Listener** with Jacob Warren | *JR Ballroom*
- **Bluegrass Ensemble: Build a Band and Arrange a Song on the Spot** (all instruments) with John Seebach | *SC 103*

TUESDAY

- **The Songs of Leiber and Stoller** with Flawn Williams | *Chapel*
- **Ballads Circle** with Penny Anderson | *SC 318*
- **Songs about Water** with Annalee Koehn | *JR Upstairs Lounge*

- **Overview of Bluegrass Rhythm Guitar Styles** with Tyler Grant | *SC 100*
- **Vocal Intensive** with Dede Wyland | *Madden Center Timms Lounge*
- **"But the Greatest of All was 'Jenny Lynn'..." Focus on One of Bill Monroe's Most Beloved Fiddle Tunes--in AEAE tuning** (fiddle and mandolin, all levels) with Mike Compton | *Roxanna Booth Lounge*
- **Creating a Solo on the Fly in a Jam Session** (all instruments) with Greg Cahill | *JR Ballroom*
- **Bluegrass Ensemble: Build a Band and Arrange a Song on the Spot** (all instruments; you can come just one day or multiple days) with John Seebach | *SC 103*

WEDNESDAY

- **Songs Pete Seeger Sang** with Matt Watroba | *JR Upstairs Lounge*
- **Songs in Spanish** with Kari Sickenberger | *Chapel*
- **Excellent Jam Songs for Maximum Fun** with Val Mindel | *Halliehurst Side Porch*

- **Theory and Ear Training 101** with Rebecca Frazier | *Madden Center Timms Lounge*
- **Intro to Swing and Jazz** with Grant Flick | *JR Ballroom*
- **Songwriting Master Class: Bring One of Your Original Songs for Becky to Listen To and Provide Feedback On** with Becky Buller | *Roxanna Booth Lounge*
- **Jammin' with Sarah** with Sarah Larsen | *SC 100*
- **Bluegrass Ensemble: Build a Band and Arrange a Song on the Spot** (all instruments; you can come just one day or multiple days) with John Seebach | *SC 103*

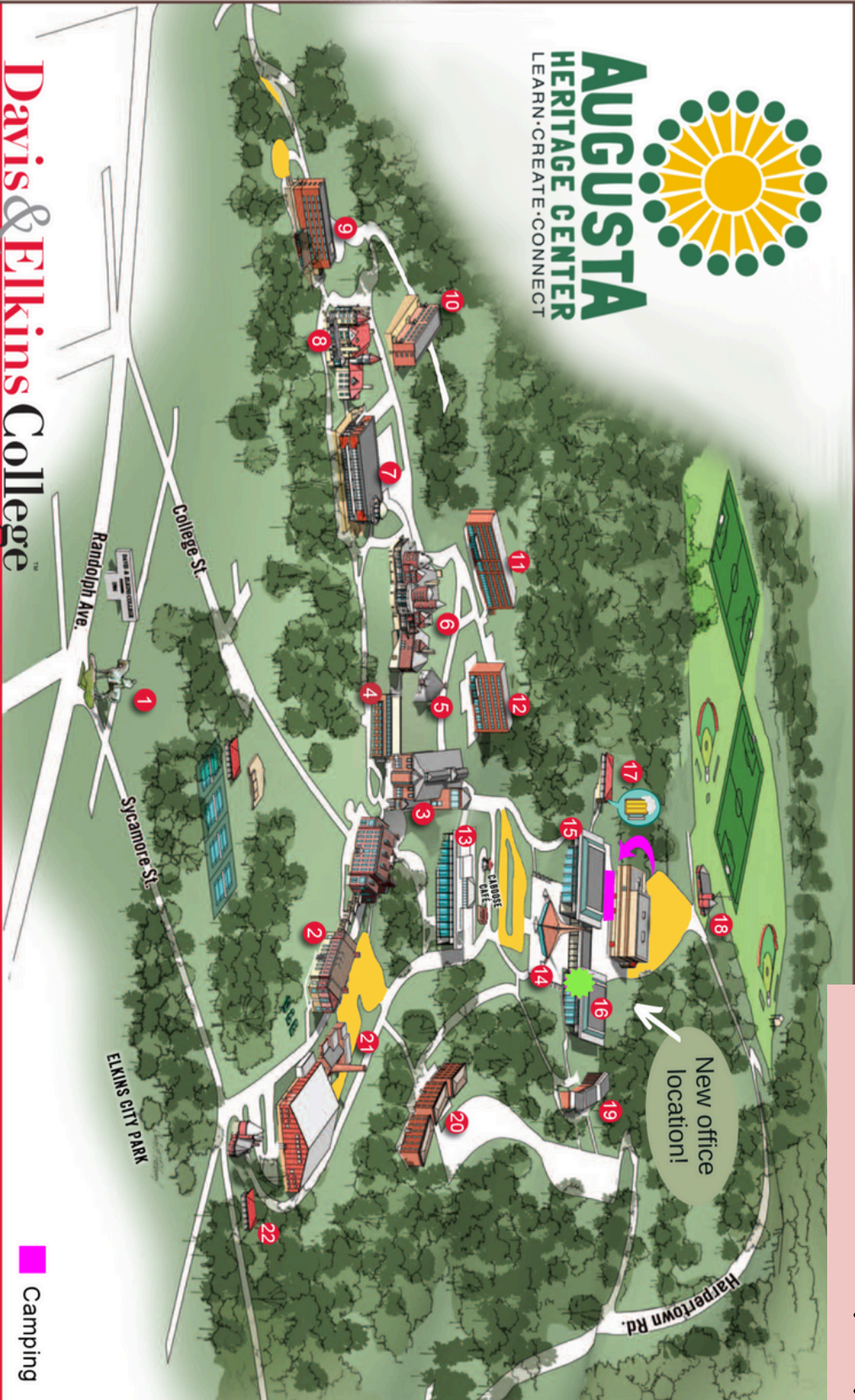
THURSDAY

- **Sound and Silence** with Abigail Washburn | *Chapel*
- **The Wacky and Wonderful World of Whistling, Including Novelty Tunes That Go Well with Whistling** with Emily Eagen | *JR Upstairs Lounge*
- **African and Caribbean Songs** with Kathy Bullock | *SC 318*

- **MC Dos & Don'ts: How to Sound like a Pro When You're Talking Onstage or On the Radio** with Ned Luberecki | *JR Ballroom*
- **Subtleties of Rhythm Playing** (all instruments) with Matt Flinner | *SC 100*
- **Yodeling 101** with Dede Wyland | *Madden Center Timms Lounge*
- **Yodeling a Scandinavian Fiddle Tune** | *Halliehurst Side Porch*
- **Bluegrass Ensemble: Build a Band and Arrange a Song on the Spot** (all instruments; you can come just one day or multiple days) with John Seebach | *SC 103*



**AUGUSTA**  
HERITAGE CENTER  
LEARN • CREATE • CONNECT



# Davis & Elkins College

1. Campus Entrance
2. Albert Hall
3. Booth Library
4. Jennings Randolph Hall
5. The Icehouse
6. Halliehurst
7. Benedum Dining Hall / Madden Center
8. Graceland Inn
9. Conference Center
10. Darby Residence Center

11. Booth Residence Hall
12. Gribble Residence Hall
13. Science Center
14. Chapel
15. Hermanson Campus Center
16. Myles Center / Auditorium
17. Augusta Dance Pavillion
18. Gates Tower
19. Moyer Residence Hall
20. Presidential Residence Hall

21. Boiler House Theatre
22. Morrison - Novakovic Center

Camping

AH : Albert Hall | BHT: Boilerhouse Theatre | CC : Robert C Byrd Conference Center | SC: Eshleman Science Center  
 HCC: Hermanson Campus Center | JR: Jennings Randolph Hall | MCA: Myles Center for the Arts | BL: Booth Library

Note: We cannot park behind Gribble/Booth due to continued construction! We are very sorry for the inconvenience!

### Available Parking:

- Overnight:**
  - Boiler House Lot (below Library)
  - Chapel Lot
  - McDonnell Center Lot (behind MCA)
- 2-hour:**
  - Dining Hall Lot
- Sunday/Saturday 15-min Load/Unload & Weekend Parking for those with mobility needs:**
  - Angled spaces near Booth Dorm & Hill across from Science Center.

### DO NOT PARK:

- In visitor spaces in front of Halliehurst Mansion
- In designated Employee/Staff Parking Spots
- If you are able to walk, please leave spaces near dorms and classroom buildings free for those who need to drive for mobility needs.

### Myles Center:

- The Paull Gallery is located in the right side of the top floor
- The Painting and Printing studios are located on the bottom floor

# Please consider donating to Augusta in 2024

Your support will help launch Augusta into its next 50 years!

Scan or visit 

[augustaartsandculture.org/donate](http://augustaartsandculture.org/donate)